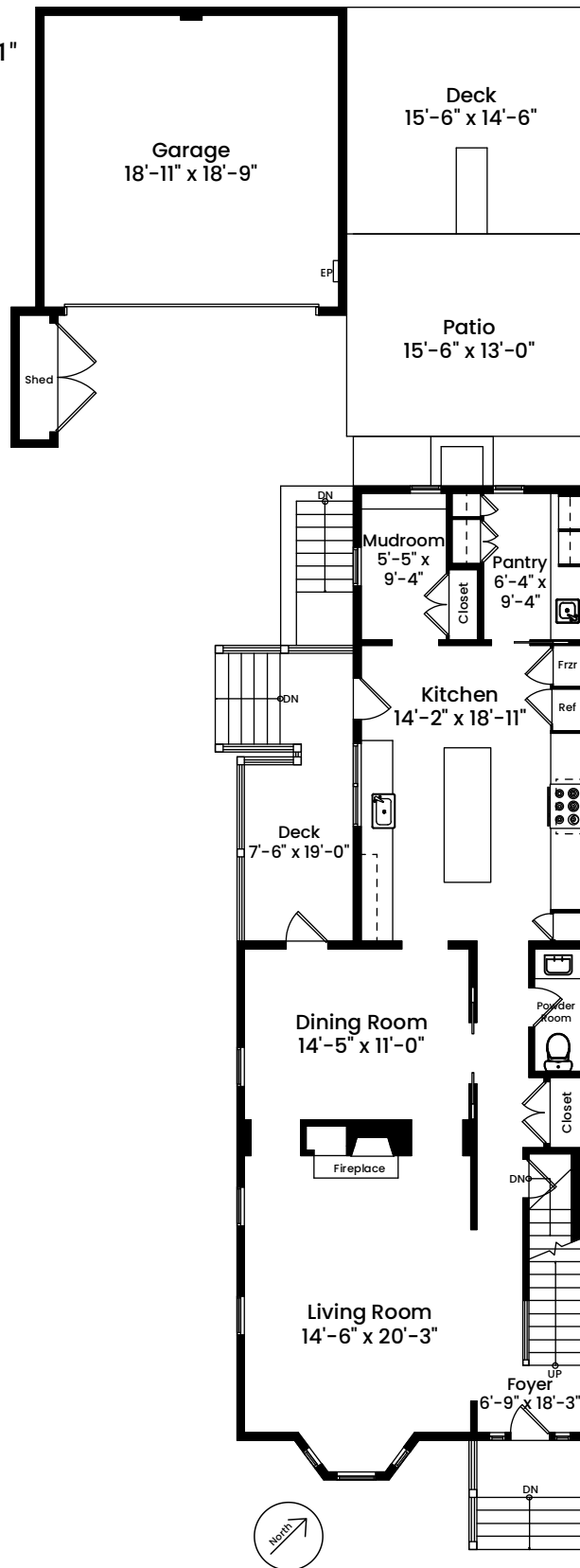


# 67 Inman Street | Cambridge, MA 02139

**FIRST FLOOR**  
CEILING HEIGHT 8'-11"

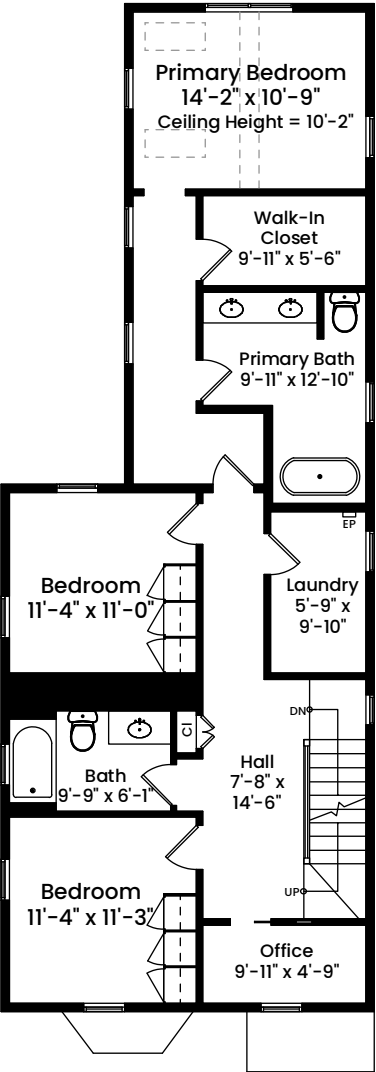


Architecturally drafted in July 2025 by:  
National Floor Plans (800) 328-0217  
Associate Member | American Institute of Architects  
Contact [www.nationalfloorplans.com](http://www.nationalfloorplans.com) for .dwg AutoCAD files  
or square footage questions about this property.

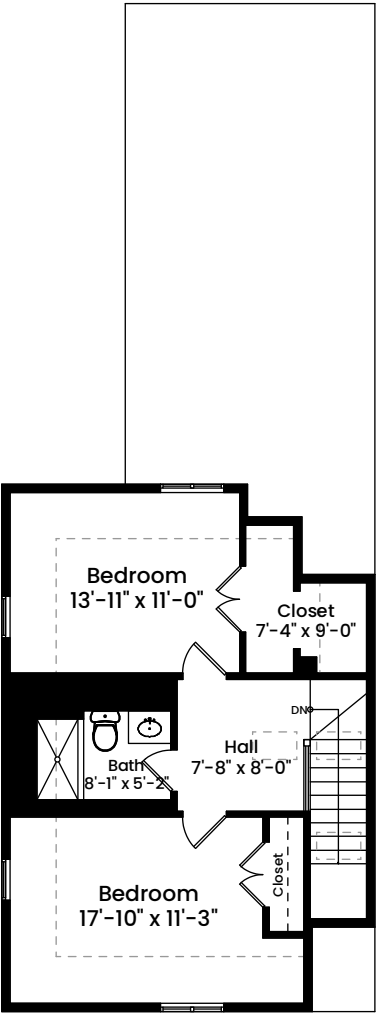
Dimensions are not guaranteed and are provided for informational purposes only.  
Individual room dimensions are not used to calculate overall square footage.  
National Floor Plans follows ANSI guidelines for calculating square footage.

67 Inman Street | Cambridge, MA 02139

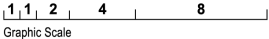
**SECOND FLOOR**  
CEILING HEIGHT 7'-11"



**THIRD FLOOR**  
CEILING HEIGHT 8'-2"



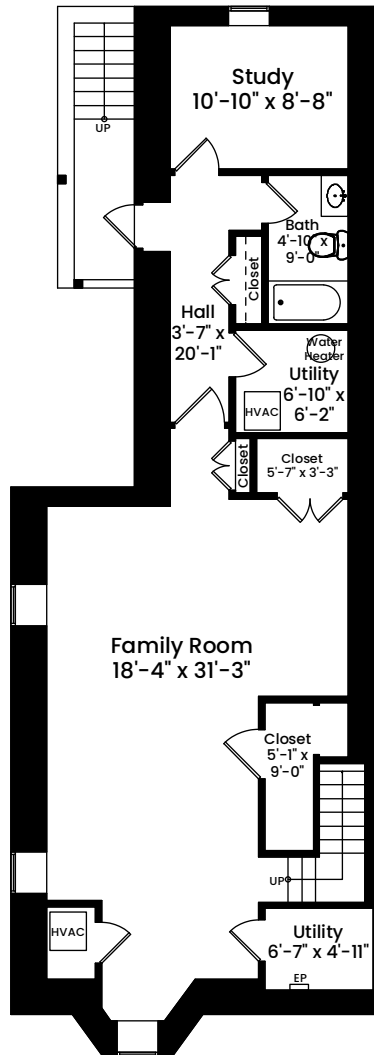
Architecturally drafted in July 2025 by:  
National Floor Plans (800) 328-0217  
Associate Member | American Institute of Architects  
Contact [www.nationalfloorplans.com](http://www.nationalfloorplans.com) for .dwg AutoCAD files  
or square footage questions about this property.



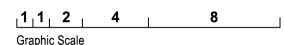
Dimensions are not guaranteed and are provided for informational purposes only.  
Individual room dimensions are not used to calculate overall square footage.  
National Floor Plans follows ANSI guidelines for calculating square footage.

# 67 Inman Street | Cambridge, MA 02139

## LOWER LEVEL CEILING HEIGHT 7'-11"



Architecturally drafted in July 2025 by:  
National Floor Plans (800) 328-0217  
Associate Member | American Institute of Architects  
Contact [www.nationalfloorplans.com](http://www.nationalfloorplans.com) for .dwg AutoCAD files  
or square footage questions about this property.



Dimensions are not guaranteed and are provided for informational purposes only.  
Individual room dimensions are not used to calculate overall square footage.  
National Floor Plans follows ANSI guidelines for calculating square footage.